



Logistics

## E-Logistics

We move you online, too

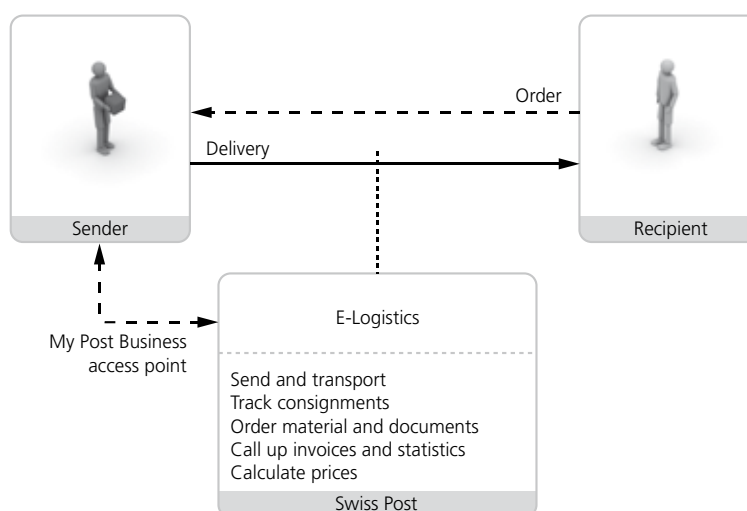
**SWISS POST** 

Would you like to have an overview of all your consignments at the press of a button? Our integrated e-services enable you to place, send and check orders online. This means that you can optimize throughput times, increase data quality and achieve greater transparency at reduced costs.

### **My Post Business: one login, many possibilities**

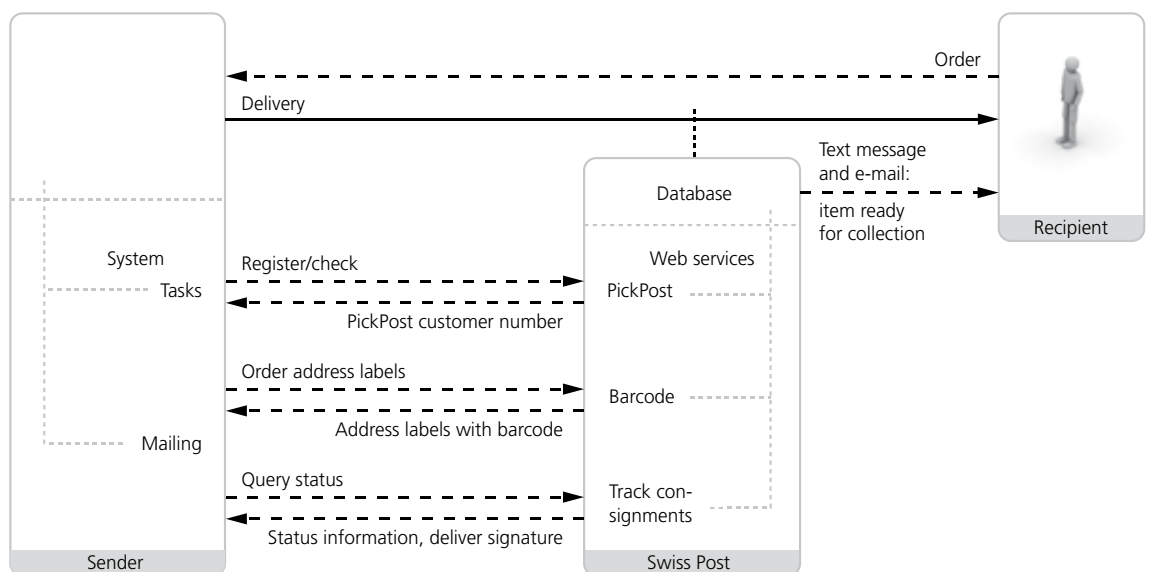
With a single login, you can access the business customer platform My Post Business ([www.swisspost.ch/mypostbusiness](http://www.swisspost.ch/mypostbusiness)) and its many online ordering, receiving, calculating, sending/transporting and tracking services.

My Post Business supports the management of your entire supply chain. The personal user account, managed through your in-house administrators, increases security and offers exceptional flexibility.



## Web services: your interface to success

The web service technology provides a standardized user-friendly interface. Before using the service, initial programming is required to integrate the data structure. The web service can then be used free of charge.



### **“Barcode” web service**

This web service enables you to order the barcodes for parcels, express and VinoLog mailings directly from your system and to link the consignment data with your own data. Addresses with an integrated barcode can be printed directly as a label with or without the recipient address or can be integrated into your waybill.

### **“Track consignments” web service**

This web service enables you to retrieve data for any item – letter, parcel, express mail, small consignments or international shipment. However, the parcel image – or the signature in the case of registered items – is only displayed for your own personal items, as with “Track consignments” (Business).

#### **For online shop operators**

Make it easier for your customers to track their orders. Integrate the “Track consignments” web service into your website.

This means that your customers no longer need to change websites. They have all the information at a glance and obtain transparent information about the current status of each consignment until they receive the ordered goods. Your customers are happy, and the pressure on your support services is significantly reduced.

### **“PickPost” web service**

With the “PickPost” web service, the PickPost data are transmitted separately to the consignment data. The sender delivers the name and customer addresses to Swiss Post using the “PickPost” web service. Within a matter of seconds, the PickPost customer numbers are transmitted to the sender. If the sender’s customer is not yet registered for PickPost, the customer is registered for the service. These newly-generated PickPost customer numbers are also returned to the sender within seconds using the “PickPost” web service.



#### **Your requirements**

- High level of technical integration and automation of processes
- Need to link data
- Maximum efficiency in processing
- Linking data with other companies
- Use options with maximum customization flexibility

#### **The advantages for you**

- You don’t have to change to another system and can stay in your accustomed user environment
- You are always up to date with the postal services on offer
- High level of availability and performance
- Your consignment and order data are linked
- You save on costs by optimizing your processes
- Transparency and control
- 24-hour access
- Data protection



#### **Additional information at**

[www.swisspost.ch/webservices-logistics](http://www.swisspost.ch/webservices-logistics)



### Send and transport

- Search for acceptance points
- Enter order
- Create dispatch lists
- Send PromoPost
- Order pick-up
- Design mailings
- Order national courier
- International information
- Prepare newspaper shipment

### Track consignments

- Tracking items becomes child's play: you can find out what condition your parcel was in when it reached the sorting plant and you can check the recipient's signature or confirm the delivery address.

### Order material and documents

- Barcodes and shipping labels
- Dispoboxes
- Forms and brochures
- Lab shipment
- Franking system
- "pro clima"

### Call up invoices and statistics

- Invoices
- Parcel statistics
- Logistics key figures
- Franking system

### Calculate prices

- The "mail calculator" for documents and goods
- The "freight calculator" for national and international freight
- The "national courier calculator" for courier services throughout Switzerland



#### Your requirements

- No great effort involved in setting up
- It is not necessary to link data
- Simple, clear and efficient
- Fast information to suit your needs

#### The advantages for you

- Easy access to various services
- More efficient way of working
- Saves time when preparing consignments
- Transparency and control
- 24-hour access
- Data protection
- No software needs to be purchased
- No programming required



#### Additional information at

[www.swisspost.ch/mypostbusiness-info](http://www.swisspost.ch/mypostbusiness-info)



Letters

Logistics

Direct marketing

Print media

Document and dialogue solutions

Swiss Post  
PostLogistics  
Viktoriastrasse 21  
P.O. Box  
3030 Berne, Switzerland

Phone 0848 888 888

[logistics@swisspost.com](mailto:logistics@swisspost.com)  
[www.swisspost.ch/logistics](http://www.swisspost.ch/logistics)  
[www.swisspost.com](http://www.swisspost.com)

**SWISS POST** 